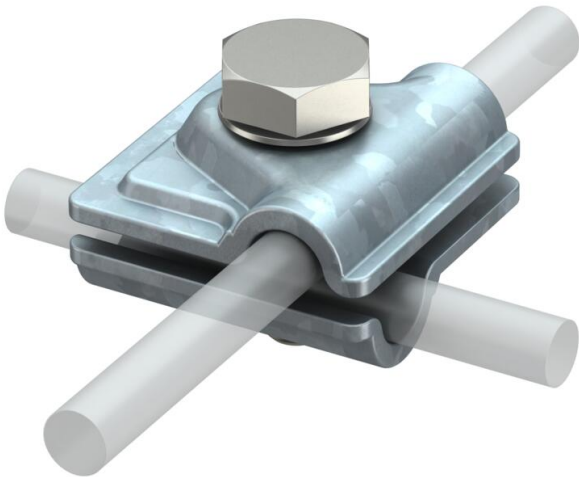


FT

: 5311500

- T
- M10 x 30
- VDE 0185-305 (IEC 62305)



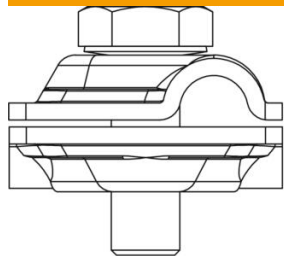
St

FT

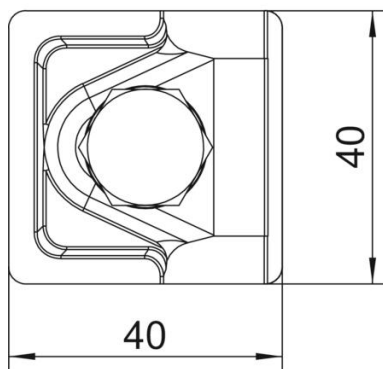
	5311500
	249 8-10 ST
1	
2	
	OBO
	40x40mm
	DIN EN ISO 1461
	20
	9.306 kg
	kg/100

FT

: 5311500



A 40 mm



	H/100 kA
	Rd 8-10 / Rd 8-10
(50HZ)(1s;≤300°C)	5.6
	Rd 8-10 mm
1	10 mm
1	8 mm
2	10 mm
2	8 mm