

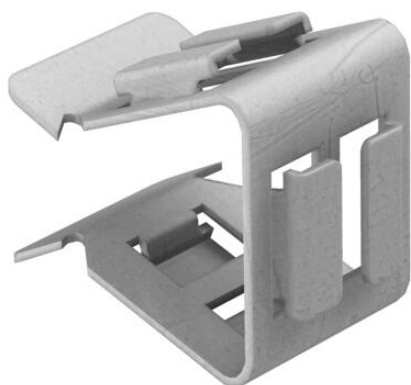
Technical data sheet

Support clamp, for pipes, seat piece

Item number: 1483999



Beam clamp adapter for knocking in. Seat for BCC beam clamps for flange thicknesses of 2–4 mm.



St Steel

ZL Zinc slat

Master data

Item number	1483999
Type	BCCA
Description 1	Seat
Description 2	for BCC 2-4
Manufacturer	OBO
Dimension	12-20mm
Material	Steel
Surface	Zinc slat
Surface standard	
Smallest sales unit	100
Unit of quantity	Piece
Weight	1.7 kg
Weight unit	kg/100 pc.

Technical data

Connection type/component	Miscellaneous
Fastening type	Clamp
Flange thickness F max.	20 mm
Flange thickness F min.	12 mm
Hinge, adjustable	no
Hinged	no