

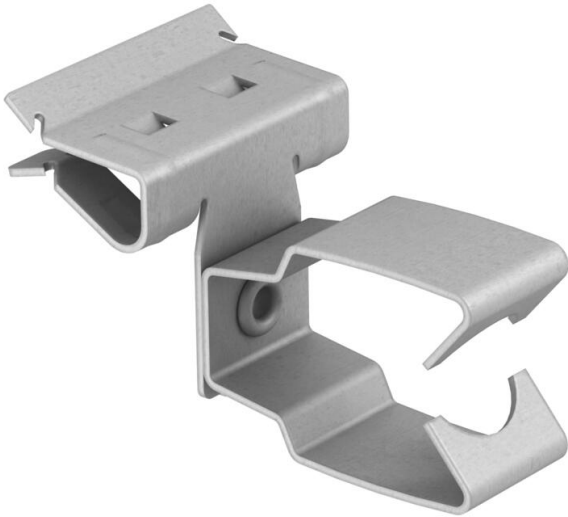
# Technical data sheet

## Support clamp, for pipes, open/side

Item number: 1483841



Beam clamp for knocking in with open pipe seat as individual fastening solution on the beam.



CE

St	Steel
ZL	Zinc slat

### Master data

Item number	1483841
Type	BCHPO 14-20 D20
Description 1	Beam clamp
Description 2	with pipe clamp 20mm
Manufacturer	OBO
Dimension	14-20mm
Material	Steel
Surface	Zinc slat
Surface standard	
Smallest sales unit	50
Unit of quantity	Piece
Weight	3.2 kg
Weight unit	kg/100 pc.

### Technical data

Connection type/component	Pipe/cable
Fastening type	Clamp
Flange thickness F max.	20 mm
Flange thickness F min.	14 mm
Pipe/cable diameter, min.	20 mm
Hinge, adjustable	no

# Technical data sheet

Support clamp, for pipes, open/side

Item number: 1483841



## Technical data

Hinged	no
--------	----