

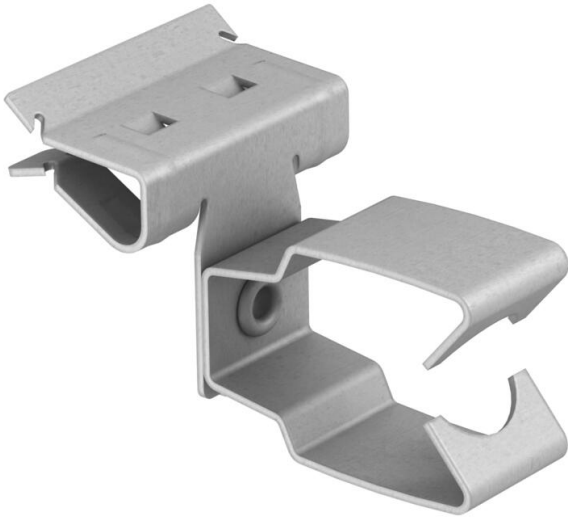
Technical data sheet

Support clamp, for pipes, open/side

Item number: 1483845



Beam clamp for knocking in with open pipe seat as individual fastening solution on the beam.



CE

St	Steel
ZL	Zinc slat

Master data

Item number	1483845
Type	BCHPO 14-20 D32
Description 1	Beam clamp
Description 2	with pipe clamp 32mm
Manufacturer	OBO
Dimension	14-20mm
Material	Steel
Surface	Zinc slat
Surface standard	
Smallest sales unit	50
Unit of quantity	Piece
Weight	3.3 kg
Weight unit	kg/100 pc.

Technical data

Connection type/component	Pipe/cable
Fastening type	Clamp
Flange thickness F max.	20 mm
Flange thickness F min.	14 mm
Pipe/cable diameter, min.	32 mm
Hinge, adjustable	no

Technical data sheet

Support clamp, for pipes, open/side

Item number: 1483845



Technical data

Hinged	no
--------	----