

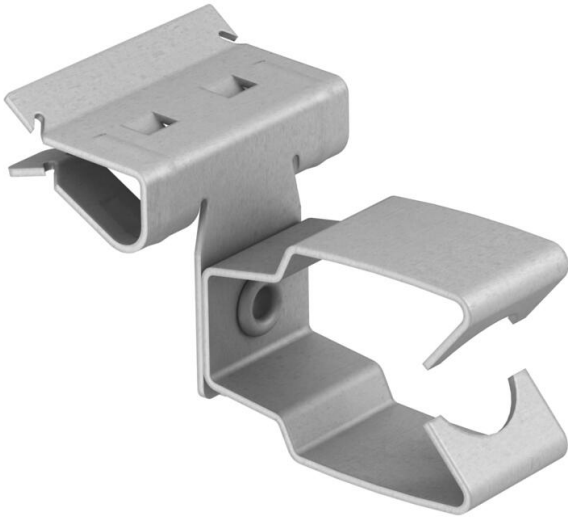
Technical data sheet

Support clamp, for pipes, open/side

Item number: 1483833



Beam clamp for knocking in with open pipe seat as individual fastening solution on the beam.



CE

St	Steel
ZL	Zinc slat

Master data

Item number	1483833
Type	BCHPO 8-14 D25
Description 1	Beam clamp
Description 2	with pipe clamp 25mm
Manufacturer	OBO
Dimension	8-14mm
Material	Steel
Surface	Zinc slat
Surface standard	
Smallest sales unit	50
Unit of quantity	Piece
Weight	3.1 kg
Weight unit	kg/100 pc.

Technical data

Connection type/component	Pipe/cable
Fastening type	Clamp
Flange thickness F max.	14 mm
Flange thickness F min.	8 mm
Pipe/cable diameter, min.	25 mm
Hinge, adjustable	no

Technical data sheet

Support clamp, for pipes, open/side

Item number: 1483833



Technical data

Hinged	no
--------	----