

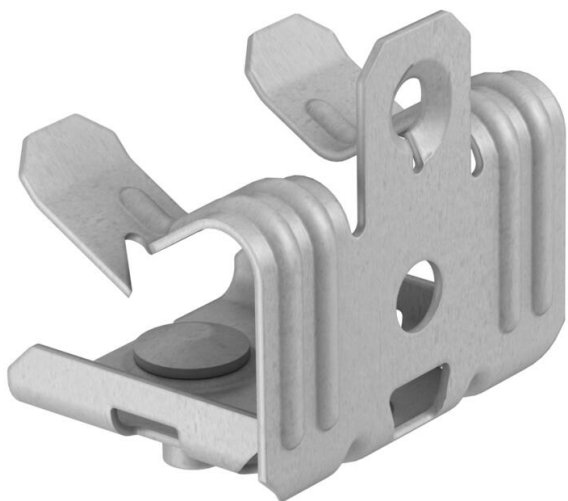
# Technical data sheet

## Beam clamp, with threaded bolt

Item number: 1483633



Beam clamp for knocking in with threaded bolt as individual fastening solution on the beam.



CE

St	Steel
ZL	Zinc slat

### Master data

Item number	1483633
Type	BCUTB 8-12,5 M6
Description 1	Beam clamp
Description 2	with threaded bolt M6x9mm
Manufacturer	OBO
Dimension	8-12,5mm
Material	Steel
Surface	Zinc slat
Surface standard	
Smallest sales unit	100
Unit of quantity	Piece
Weight	2.9 kg
Weight unit	kg/100 pc.

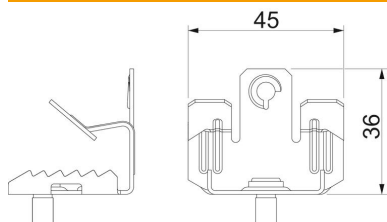
# Technical data sheet

## Beam clamp, with threaded bolt

Item number: 1483633



### Dimensions



Dimension B	45 mm
Dimension L	36 mm

### Technical data

Connection type/component	Thread
Fastening type	Clamp
Flange thickness F max.	12.5 mm
Flange thickness F min.	8 mm
Thread	M6 x 9 mm
Thread metric	6
Hinge, adjustable	no
Hinged	no