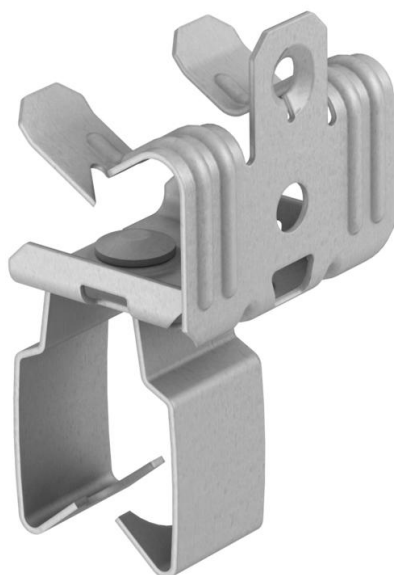


# Technical data sheet

## Support clamp, for pipes, open/bottom

Item number: 1483771



Beam clamp for knocking in with open pipe seat as individual fastening solution on the beam.

CE

- St Steel
- ZL Zinc slat

### Master data

Item number	1483771
Type	BCVPO 14-20 D20
Description 1	Beam clamp
Description 2	with bottom pipe clamp 20mm
Manufacturer	OBO
Dimension	14-20mm
Material	Steel
Surface	Zinc slat
Surface standard	
Smallest sales unit	50
Unit of quantity	Piece
Weight	4 kg
Weight unit	kg/100 pc.

# Technical data sheet

Support clamp, for pipes, open/bottom

Item number: 1483771



## Technical data

Connection type/component	Pipe/cable
Fastening type	Clamp
Flange thickness F max.	20 mm
Flange thickness F min.	14 mm
Thread	M6
Thread metric	6
Pipe/cable diameter, min.	20 mm
Hinge, adjustable	no
Hinged	no