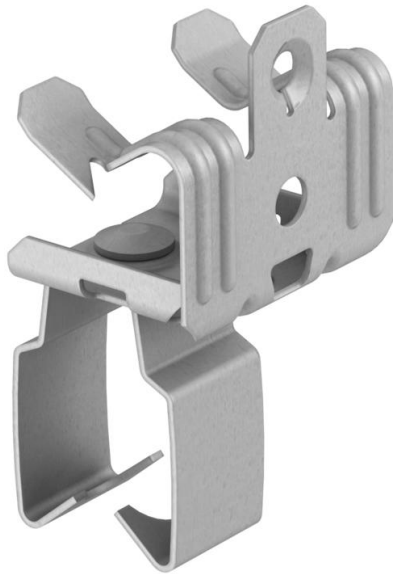


Technical data sheet

Support clamp, for pipes, open/bottom

Item number: 1483773



Beam clamp for knocking in with open pipe seat as individual fastening solution on the beam.

CE

St	Steel
ZL	Zinc slat

Master data

Item number	1483773
Type	BCVPO 14-20 D25
Description 1	Beam clamp
Description 2	with bottom pipe clamp 25mm
Manufacturer	OBO
Dimension	14-20mm
Material	Steel
Surface	Zinc slat
Surface standard	
Smallest sales unit	50
Unit of quantity	Piece
Weight	4.25 kg
Weight unit	kg/100 pc.

Technical data

Connection type/component	Pipe/cable
Fastening type	Clamp
Flange thickness F max.	20 mm
Flange thickness F min.	14 mm
Thread	M6
Thread metric	6

Technical data sheet

Support clamp, for pipes, open/bottom

Item number: 1483773



Technical data

Pipe/cable diameter, min.	25 mm
Hinge, adjustable	no
Hinged	no