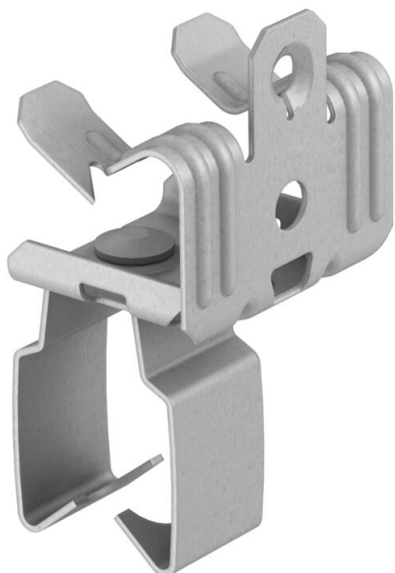


# Technical data sheet

## Support clamp, for pipes, open/bottom

Item number: 1483753



Beam clamp for knocking in with open pipe seat as individual fastening solution on the beam.

CE

St	Steel
ZL	Zinc slat

### Master data

Item number	1483753
Type	BCVPO 3-7 D25
Description 1	Beam clamp
Description 2	with bottom pipe clamp 25mm
Manufacturer	OBO
Dimension	3-7mm
Material	Steel
Surface	Zinc slat
Surface standard	
Smallest sales unit	50
Unit of quantity	Piece
Weight	3.5 kg
Weight unit	kg/100 pc.

### Technical data

Connection type/component	Pipe/cable
Fastening type	Clamp
Flange thickness F max.	7 mm
Flange thickness F min.	3 mm
Thread	M6
Thread metric	6

# Technical data sheet

Support clamp, for pipes, open/bottom

Item number: 1483753



## Technical data

Pipe/cable diameter, min.	25 mm
Hinge, adjustable	no
Hinged	no