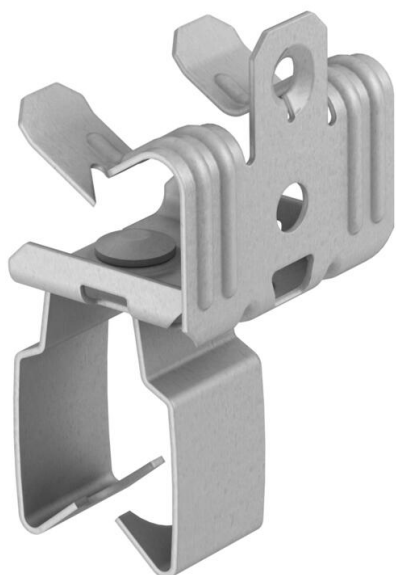


Technical data sheet

Support clamp, for pipes, open/bottom

Item number: 1483763



Beam clamp for knocking in with open pipe seat as individual fastening solution on the beam.

CE

St	Steel
ZL	Zinc slat

Master data

Item number	1483763
Type	BCVPO 8-12,5 D25
Description 1	Beam clamp
Description 2	with bottom pipe clamp 25mm
Manufacturer	OBO
Dimension	8-12,5mm
Material	Steel
Surface	Zinc slat
Surface standard	
Smallest sales unit	50
Unit of quantity	Piece
Weight	4.1 kg
Weight unit	kg/100 pc.

Technical data sheet

Support clamp, for pipes, open/bottom

Item number: 1483763



Technical data

Connection type/component	Pipe/cable
Fastening type	Clamp
Flange thickness F max.	12.5 mm
Flange thickness F min.	8 mm
Thread	M6
Thread metric	6
Hinge, adjustable	no
Hinged	no