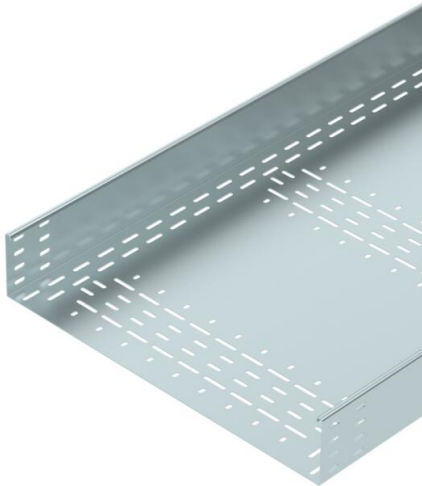


Technical data sheet

Cable tray BKRS 110 FS

Item number: 6061991



Heavy-duty, walkable cable tray system BKRS with base perforation, in 110 mm side height.

The cable tray has connector perforations on both sides. Straight connectors should be ordered separately and in the appropriate quantity.

Magnetic shield insulation without cover 20 dB, with cover 50 dB.



St Steel

FS Strip galvanized

Master data

Item number	6061991
Description 1	Cable tray BKRS
Description 2	walkable
Manufacturer	OBO
Dimension	110x600x3000
Material	Steel
Surface	Strip galvanized
Surface standard	DIN EN 10346
Smallest sales unit	3
Unit of quantity	Metre
Weight	1250.6 kg
Weight unit	kg/100 m

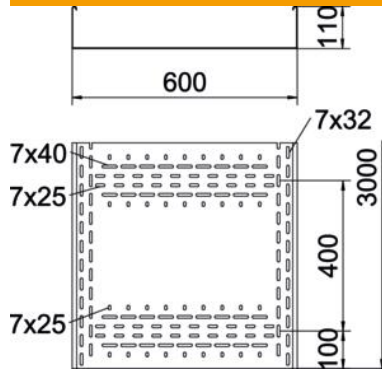
Technical data sheet

Cable tray BKRS 110 FS

Item number: 6061991



Dimensions



Length	3,000 mm
Length	10 ft
Width	600 mm
Width	24 in
Height	110 mm
Height	4 in
Plate thickness	0.08 in
Plate thickness	2 mm
Dimension B	600 mm
Dimension H	110 mm
Dimension L	3,000 mm

Technical data

Connector version	Without connectors
Mounting system fastening type	Floor
Walkable	yes
Maintain electrical functions	no
With cover	no
Mounting perforation in base	yes
NATO hole pattern	no
Usable cross-section	596 cm ²
Usable cross-section	59600 mm ²
Rustproof steel, pickled	no
Side perforation	no
Wide-span version	no
Load test type according to IEC 61537	Type II
Type of connector, cable support system	Screwed

Loads

Insertable support spacings, min.	1.5 m
Insertable support spacings, max.	3 m
Support spacing 1.5 m	1.67 kN/m
Support spacing 2.0 m	1.46 kN/m
Support spacing 2.5 m	1.2 kN/m
Support spacing 3.0 m	0.92 kN/m