

# Technical data sheet

## GES6 service outlet, used in raised floors

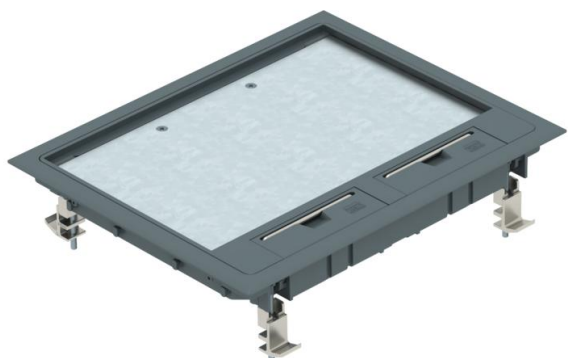
Item number: 7405259



Service outlet without locking ladder for use in raised floors for indoor use. Fastening bracket in a clamping range of up to 50 mm plate thickness.

Carpet protection frame, hinged lid and cord outlet made of polyamide.

5 mm floor covering recess in the hinged lid.



PA Polyamide

### Master data

Item number	7405259
Type	GES6 7011 OR
Description 1	Service outlet
Description 2	without locking ladders
Manufacturer	OBO
Dimension	273x220x30
Colour	Iron grey; RAL 7011
Material	Polyamide
Smallest sales unit	1
Unit of quantity	Piece
Weight	153.2 kg
Weight unit	kg/100 pc.

### Technical data

Number of mounting boxes	3
Version for	Rectangular
Cable outlet version	Swivellable cord outlet
Floor covering protection frame	yes
Floor care	Dry
Seal installation option	no

# Technical data sheet

## GES6 service outlet, used in raised floors

Item number: 7405259



### Technical data

Suitable for raised floor installation	yes
Suitable for screed-flush closed underfloor ducts	no
Suitable for cavity floor installation	yes
Suitable for wet care	no
Suitable for underfloor ducts	no
Device support to accept mounting boxes	yes
Length of external dimensions	220 mm
Length of installation dimensions	199 mm
With floor covering recess	yes
Frame version	Carpet protection frame
Protection rating (IP) when used	IP20
Protection rating (IP) when unused	IP40
Protection rating IK code	IK08
Heavy-duty version	no
Approvals	VDE
Opening mechanism	Handle
Floor covering thickness	5 mm