

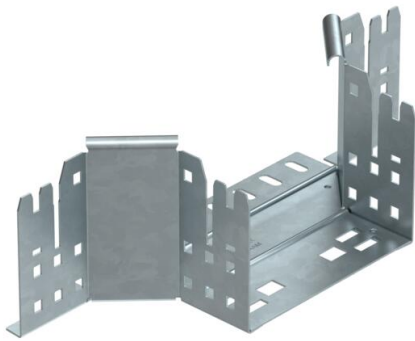
Technical data sheet

Magic add-on tee 110 FT

Item number: 6041941



Add-on tee with quick connector system. For all cable tray types of 110 mm side height.



St

Steel

FT

Hot-dip galvanised

Master data

| | |
|---------------------|----------------------|
| Item number | 6041941 |
| Description 1 | Add-on tee |
| Description 2 | with quick connector |
| Manufacturer | OBO |
| Dimension | 110x150 |
| Material | Steel |
| Surface | Hot-dip galvanised |
| Surface standard | DIN EN ISO 1461 |
| Smallest sales unit | 1 |
| Unit of quantity | Piece |
| Weight | 64.3 kg |
| Weight unit | kg/100 pc. |

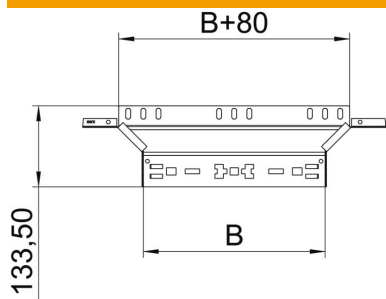
Technical data sheet

Magic add-on tee 110 FT

Item number: 6041941



Dimensions



| | |
|-----------------|---------|
| Width | 150 mm |
| Height | 110 mm |
| Plate thickness | 1.25 mm |
| Dimension B | 150 mm |

Technical data

| | |
|---|----------------------|
| Bend (angle) | 90° |
| Connector version | Integrated connector |
| Maintain electrical functions | no |
| Material thickness, floor plate | 1.25 mm |
| NATO hole pattern | no |
| Change of direction | Horizontal |
| Rustproof steel, pickled | no |
| Wide-span version | no |
| Type of connector, cable support system | Click fastening |
| Rail thickness | 1.25 mm |