

Technical data sheet

Additional support for BKRS



Item number: 6049288

Additional support for the elevation of the walkable BKRS cable tray system on the floor. Required for elevations with Z supports ZST from a tray width of 500 mm. Fastening with flat head screw FKS 6x12 mm (item no. 6049246).



- St** Steel
- FS** Strip galvanized

Master data

Item number	6049288
Type	ZS BKRS 110
Description 1	Additional support for BKRS
Description 2	system height 110
Manufacturer	OBO
Dimension	42x42x75
Material	Steel
Surface	Strip galvanized
Surface standard	DIN EN 10346
Smallest sales unit	1
Unit of quantity	Piece
Weight	9.336 kg
Weight unit	kg/100 pc.

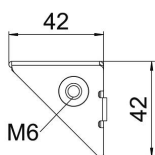
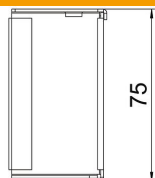
Technical data sheet

Additional support for BKRS

Item number: 6049288



Dimensions



Height	75 mm
Dimension L	75 mm

Technical data

Version for	Miscellaneous
Suitable for mesh cable tray	no
Suitable for cable ladder	no
Suitable for cable tray	yes
Tray fastening	Screw-on
Rustproof steel, pickled	no